

LINE:

LABEL PRINTING SCALE

MODEL:

TLS-20 & TLS-40L

BENEFITS

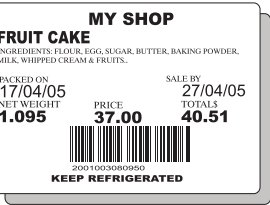
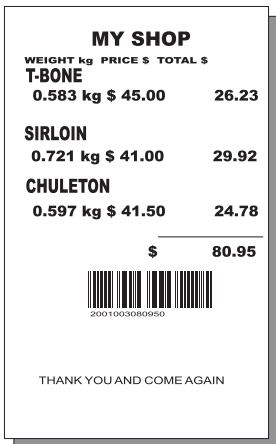
PROGRAM IT TO FIT YOUR NEEDS

- * It can work with up to twenty sales persons
- * Returns, discounts, non-weighed products functions
- * Each of the 10,000 PLU's are stored by a folder system.
- * 500 programmable ingredients
- * Personalize printing formats.
- * Personalize type and writing for bar codes
- * Easy editing of 10,000 PLU's

SPECIFICATIONS

	TLS-20	TLS-40L
Capacity	20 kg	40 lb
Minimum division	0.005 kg	0.01 lb
Weighed minimal unit	100 g	0.2 lb
Backlight	Included	
Power input	110v/60hz (220v/50 hz Optional)	
Power supply adapter	Included	
Programmable memories	10,000 memorias (PLU's)	
Plate	35.5 X 41 cm	
Rechargeable battery	Included (it lasts up to 8 hours)	
Maximum tare	9.995 kg	19.99 kg
Price kg/ max	999.99 (99.999 optional)	
Price \$ /max	9999.99 (999.999 optional)	
Operation temperature	14 to 104 °F (-10 to 40 °C)	
Storage Temperature	-4 to 122 °F (-20 to 50 °C)	
Net weight	7.8 lb /3.5 kg	7.8 lb /3.5 kg
Shipping weight	10.7 lb/4.8 kg	10.7 lb/4.8 kg

PRINTING FORMATS



Continuous paper 56 mm/ 2.2" with or without adhesive

48 x 38 mm/ 1.8" x 1.49" Label

56 x 40 mm/ 2.2" x 1.57" Label

HIGH SECURITY

Prevents non-authorized people to modify the scale's programming; access is limited to two levels:

- Supervisor: Able to make discounts, returns, adding new products, etc. Through a password
- Manager: Authorizes the password for the supervisor.

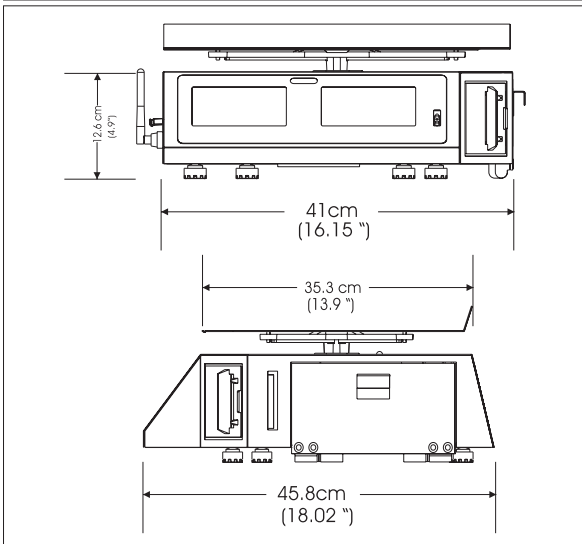


PUBLICITY MESSAGES

It features LCD display which provides more confidence to your customer. Displays publicity messages previously programmed.



DIMENSIONS



EASY-TO-CHANGE CARTRIDGE

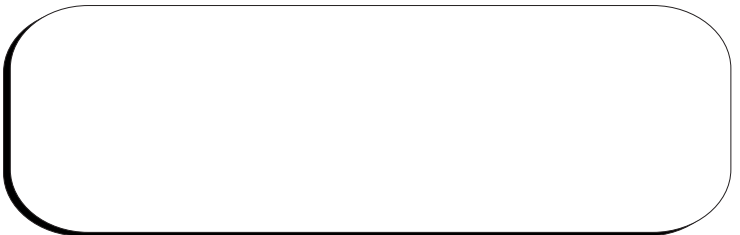
The label cartridge is easy to remove from the scale to change the paper or label roll. Larger label roll capacity (1,500 labels per roll) expedites customer service and reduces down times.



ADMINISTRATOR SOFTWARE FOR PC INCLUDED

DISTRIBUTED BY

NOM



ALL INFORMATION IS SUBJECT TO CHANGE WITHOUT NOTICE